








Plannummer: 2.06

**Landschaftsgliederung:
Oberflächenformen**

Freiraumkonzept

Legende:



Becken

-  Beckenebene - Junge Alluvionen
-  Beckenebene - Trockene Terrasse
-  Beckenebene - Terrasse - ehemaliges Moor
-  Moorflächen
-  Inselberge



Hügelland

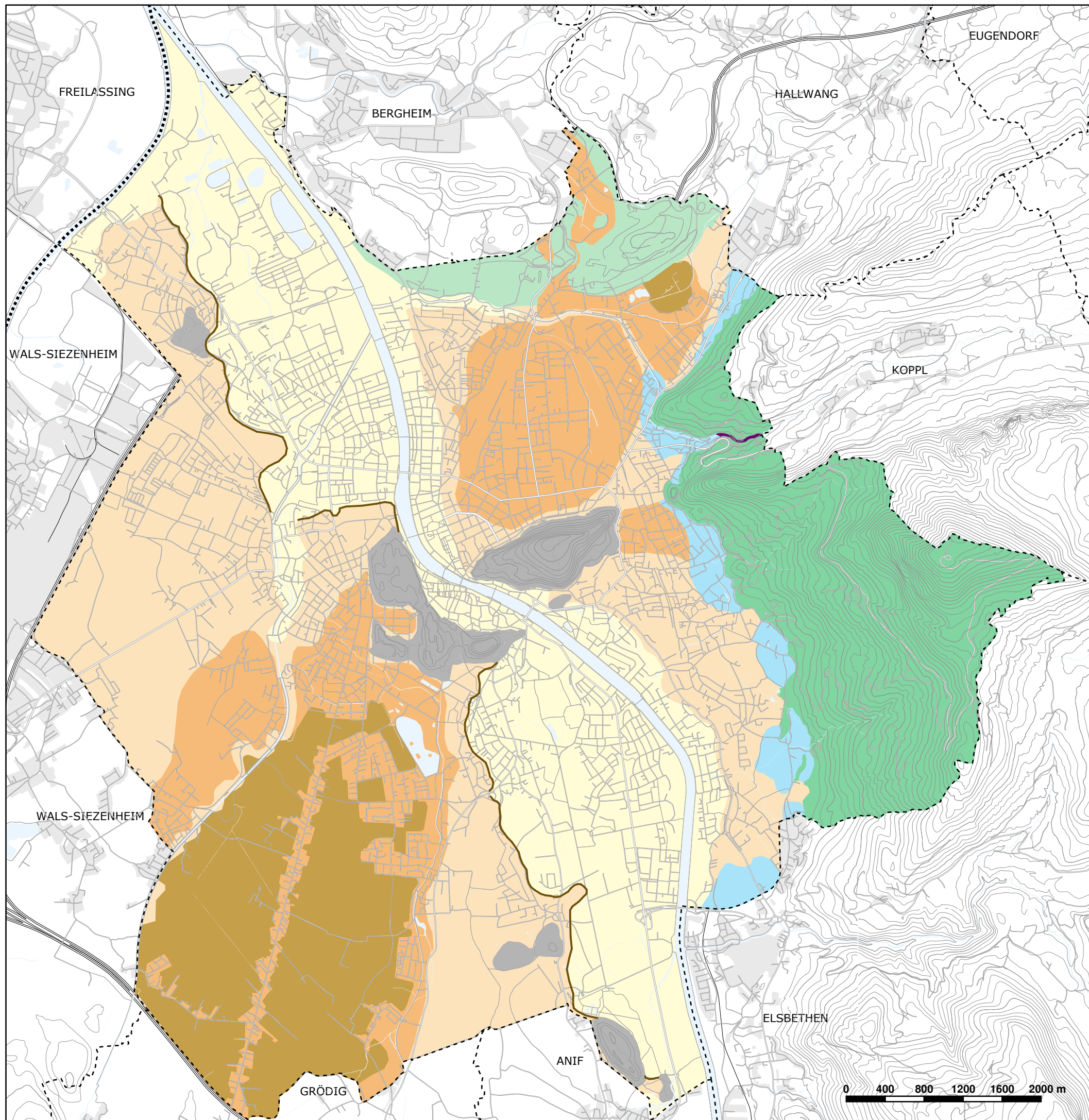
-  Hügelland

Mittelgebirge

-  Stark reliefgeprägtes Mittelgebirge
-  Taleinschnitt

Markante Übergangsformen

-  Schwemmfächer
-  Terrassenkante der Friedhofsterrasse



Plangrundlage: Digitaler Stadtplan
Datenquelle: Amt für Stadtplanung und Verkehr

Datenstand: 08.09.2008
Erstellt am: 03.12.2008